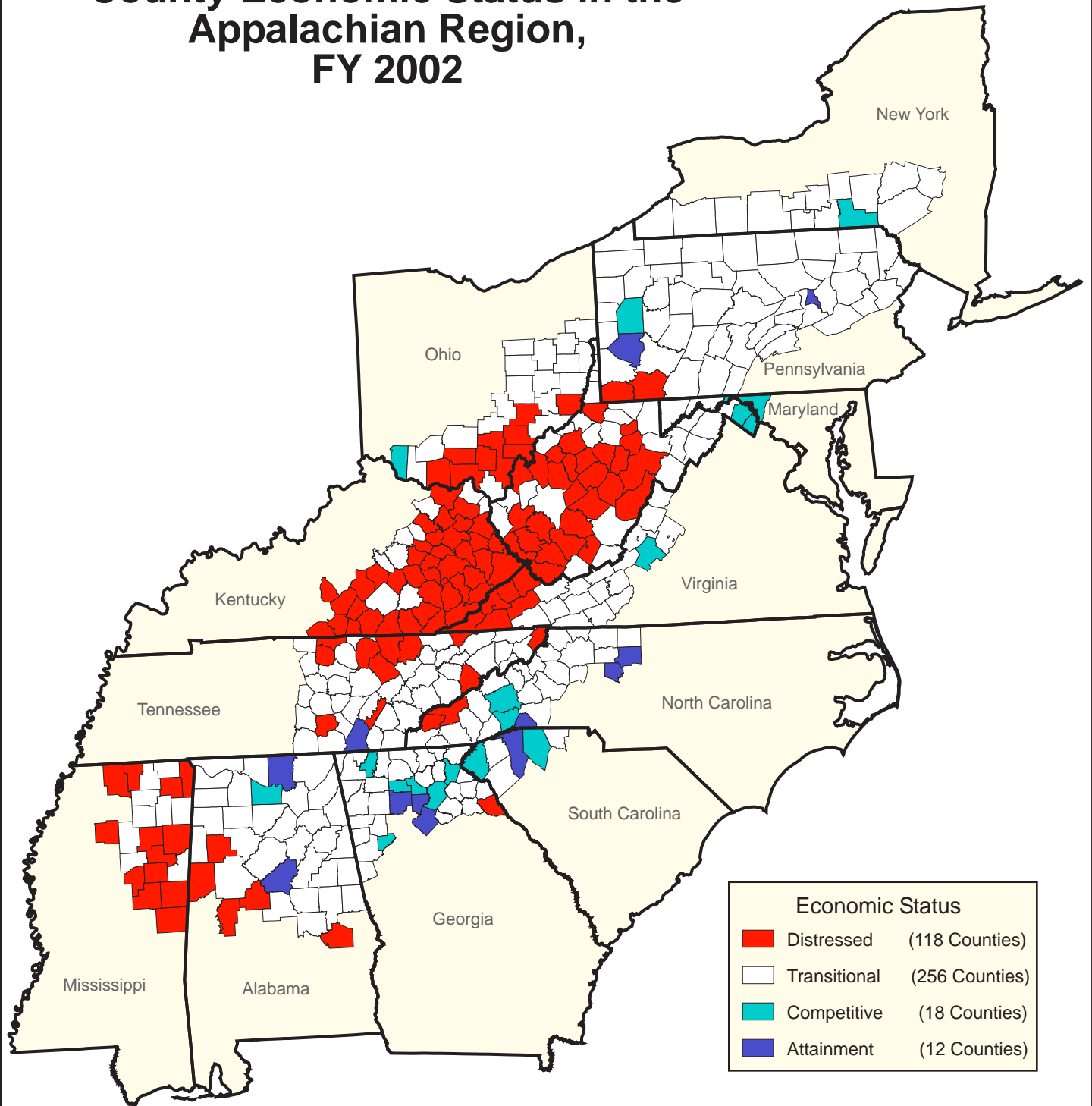


County Economic Status in the Appalachian Region, FY 2002



Economic Status	
■	Distressed (118 Counties)
■	Transitional (256 Counties)
■	Competitive (18 Counties)
■	Attainment (12 Counties)

Distressed counties have a three-year average unemployment rate that is at least 1.5 times (150%) the U.S. average of 4.6 percent; have a per capita market income that is less than two-thirds (67%) of the U.S. average of \$23,564 and have a poverty rate that is at least 1.5 times (150%) the U.S. average of 13.1 percent OR have 2 times (200%) the poverty rate and qualify on one other indicator.

Data Sources:
 U.S. Department of Labor, Bureau of Labor Statistics (unemployment data), 1997-1999;
 U.S. Department of Commerce, Bureau of Economic Analysis (income data), 1998;
 U.S. Department of Commerce, Bureau of the Census (poverty data), 1990.